



BRIDGEWATER  
RETIREMENT COMMUNITY

*energy* FOR LIFE

2025 IMPACT AND WELL-BEING REPORT

**“As you read this report, I hope  
you see a community shaped by  
compassion, creativity, and a shared  
belief in what’s possible.”**

**—Rodney Alderfer**



## FROM THE PRESIDENT

Dear Friends,

At Bridgewater Retirement Community, impact isn't defined by a single moment or milestone—it's shaped over time through intentional choices, shared values, and a commitment to serving others well. This Impact & Well-Being Report reflects a year of continued growth, learning, and forward-looking investment in the people and partnerships that make our community strong.

In 2025, BRC celebrated 60 years of service. While milestones invite reflection, this anniversary reminded us that our story has always been about more than looking back. From our earliest days, BRC has been shaped by people willing to imagine what could be and then make it happen. That spirit continues to guide us as we plan responsibly for the future while remaining grounded in our mission.

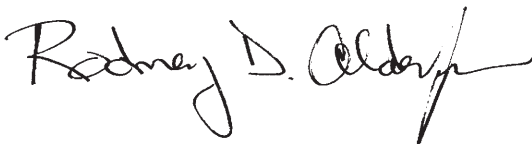
At the heart of our work are our people. In 2025, we invested deeply in team members through training, leadership development, student debt relief, and much more. Culture at BRC is lived daily in how team members serve residents, support families, and encourage one another. When team members are supported, residents experience consistency, connection, and trust, strengthening the entire community.

Well-being remained a central focus throughout the year, supporting residents living fully through life enrichment, fitness, technology, horticultural therapy, and intergenerational programming. At the same time, Community Connections took on renewed purpose as residents and team members extended that sense of well-being beyond campus through service, partnerships, and outreach. Many of these efforts became part of our 60-in-60 initiative—marking our anniversary not with a single celebration, but with a year defined by showing up for others.

Thanks to generous donor support, innovation grants continued to fuel a diverse range of ideas that strengthened well-being, connection, and community life—some launching this year and others continuing into 2026. Alongside this work, BRC advanced sustainability through investments in local food sourcing, waste reduction, and operational efficiency, reinforcing a commitment to a sustainable future.

As you read this report, I hope you see more than numbers and highlights. I hope you see a community shaped by compassion, creativity, and a shared belief in what's possible. Whether you are a resident, family member, team member, donor, partner, or friend of BRC, thank you for being part of this journey. Together, we honor what has been built—and remain committed to shaping what's next.

With gratitude,



Rodney D. Alderfer

*President | Bridgewater Retirement Community*



**On the cover:** David Holl joined fellow musicians in The Retreat for an afternoon of lively folk music.



# Who We Are

BRC is a vibrant nonprofit Life Plan Community in the heart of the Shenandoah Valley with a vision to enhance and energize healthy living for our residents and seniors throughout our region. Guided by our core principles of **compassion**, **innovation**, and **stewardship**, we offer the environment, support, and opportunities that empower residents to make the most of every day.

As a Life Plan Community, we offer a continuum of support through four levels of living: Independent Living, Assisted Living, Memory Support, and Nursing Households. But no matter the level, all residents benefit from an environment optimized to enhance their self-agency and dignity. And all BRC residents enjoy the security of our **Home No Matter What Promise**, which ensures we will never ask them to leave because they have exhausted their financial resources.

And we're more than just a great place for older adults to thrive! We're also:



**An amazing place to work** with competitive pay, generous benefits, and an intentional workplace culture built on the principles of servant leadership.



**A trusted community partner** with deep connections and a reputation for strong support for other area causes.



**A cause worthy of support.** Our Home No Matter What Promise is made possible by generous contributions to the BRC Foundation.

## Our Mission:

Promoting an engaging lifestyle within our compassionate community

## Our Vision:

Enhance and energize healthy living

## BRC COMMUNITY BY THE NUMBERS\*

# 582

## RESIDENTS

- 359 Independent Living
- 69 Assisted Living
- 31 Memory Support
- 123 Nursing Households

# 474

## TEAM MEMBERS

*\*Numbers represent census at the end of the 2025 fiscal year. Team members include full-time, part-time, and PRN/as needed.*



# Delivering THE MAGIC

## *Celebrating John Neff's Impact*

Long before BRC reshaped its definition of culture, John Neff believed that places thrive when people are invited to dream—when they are encouraged to imagine not just what *is*, but what could be. That belief, shaped by decades of leadership and a lifelong admiration for Walt Disney, became a defining force behind his 36 years of service as a board member at Bridgewater Retirement Community.

“If you can dream it, you can do it,” John often says, quoting Disney. It’s a philosophy that has guided his approach to planning, mentoring, and leading at BRC—always thinking about tomorrow, always asking what might be possible next.

John’s own story begins in Harrisonburg, Virginia, where he grew up in the Church of the Brethren and learned early what it means to serve. After graduating from Harrisonburg High School, he headed to Virginia Tech, earning a degree in building construction and civil engineering. In 1974, he returned home to begin a career at Nielsen Construction—an organization that became both his professional proving ground and the place where his instincts for leadership took root.

John advanced through the ranks at Nielsen, from project manager and estimator to Vice



President, before being elected President and CEO in 1986. “My dad worked for Nielsen,” John says, “so I tell people I bled green.” He spent his early years there working alongside his father, learning firsthand what steadiness, excellence, and long-range thinking look like in practice. By the time he retired in 2008, John had helped shape Nielsen for more than three decades, leading with a blend of discipline and imagination that would leave its mark on BRC, too.

But leadership for John was never just a professional skill—it was a responsibility. “I sensed a call to serve the community,” he says. A love for giving back had been instilled in him by his parents: whatever you’ve received, you’re meant to return.



That call ultimately led him to join BRC's board 36 years ago, when then-President John Garber invited him to serve—long before BRC became the vibrant, resident-centered community it is today.

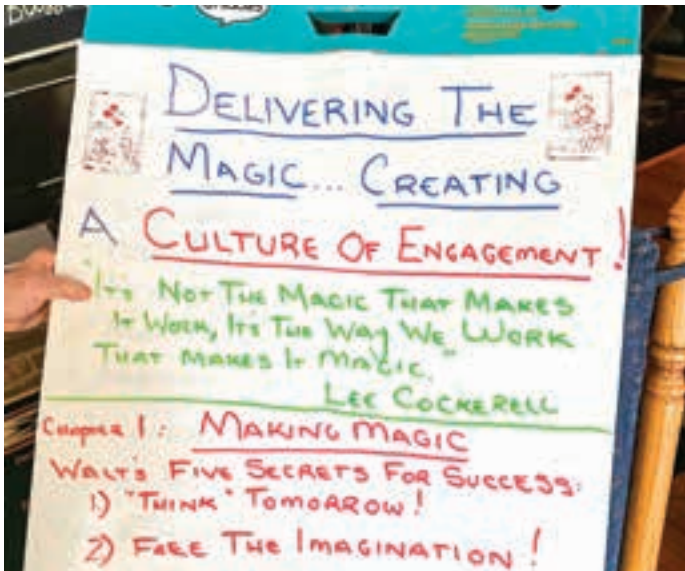
John still laughs as he recalls Garber's reassurance. "He said, 'Now I want you to know it doesn't require that much time. All you need to do is come to the meetings four times a year—the term is four years, sixteen meetings, and you'll be off.'" John pauses. "Those were famous last words. I'm 36 years in."

At the time, BRC was known primarily as what John calls the "medical model" or even the "hospital model" for seniors. "It wasn't a place to go for a vibrant new lifestyle," he says. "It was,

'They're going to take care of me until I can't anymore.'"

But John saw a different future. Part of that vision came from listening: sitting under long-serving board members, absorbing the mission and history, and learning what BRC had been and what it was capable of becoming. Another part was deeply personal—the conviction that BRC's promise mattered most when life became uncertain.

[Continued on next page]



## DELIVERING THE MAGIC

[continued]

John never lost sight of BRC's commitment to support residents even when resources ran out. That promise recently became deeply personal when his cousin needed skilled care and experienced that same compassion firsthand. Reflecting on that moment, John shares with President Rodney Alderfer, "That is the very reason I continue to be here—because I know the heart that's here."

Another part of John's vision came from an unexpected place: Walt Disney.

John doesn't love Disney casually. It's woven into the way he thinks. In the 1970s, it showed up in his personal life: he met his wife Linda through church, proposed two days later, and after she took two more days to say yes, they married in 1977. "And once again," John says with a grin, "my love for Disney... we elected to go down there [to celebrate]."

Years later, that playful spirit still defines their family life. John and Linda describe themselves as "12-year-olds in 75-year-old bodies," planning trips and riding roller coasters with the same joy that shapes how John talks about leadership: people don't thrive where life is merely managed—they thrive where life is lived.

At BRC, John took Disney's principles and translated them into a blueprint for transformation. He studied what seniors wanted and needed, joined professional associations, attended conferences, traveled to other communities, and brought those learnings back to the boardroom. "BRC is in the hospitality business," he would often say, because residents deserve more than services—they deserve an experience.

John carried that belief into the way BRC planned for the future. He never wanted BRC to simply "keep up" with other communities—he wanted it to lead. His passion for strategic planning became a steady drumbeat across decades, shaping master plans, facility development, culture shifts, innovation, and growth across the continuum. He describes it as the work of dreaming together and then turning those dreams into reality.

Chief Finance Officer Jim Weaver remembers John's influence clearly, because it was there from the beginning. "The first board meeting I ever attended—January of 1990—we adopted our very first master plan," Jim recalls. "John, Jack Booth, John Garber, and Ray Landes were adamant that we had to have a plan."

That insistence never faded. "He's really pushed us to keep planning," Jim says, "sometimes harder than we want to be pushed—but it served us very well." And the results speak for themselves. "We used to travel around the Mid-Atlantic learning from other communities," Jim adds. "Now I'm proud to say other people come to us to see what we're doing—and that has so much to do with John."

John's mark, though, wasn't only on buildings and plans. It was on people.

In the last dozen years, as BRC leaned deeply into strengthening its culture, John became known not just as a planner, but as a mentor who led with heart. "When I think about your influence," Vice

President of Development & Community Relations Annie Frazier told him at his final board meeting, “I think about all the ways you have led with your heart.” She spoke about the way he didn’t advise from a distance—he showed up, met with leaders one-on-one, worked directly with team members, and offered both challenge and belief. “You have believed in us,” Annie shares. “That belief allowed us to be bold in our decision-making and operate from a place of confidence. That is such a gift.”

President Rodney Alderfer saw that same pattern: John was the person who could both push and steady. He recalled a moment in 2012, when BRC was preparing to launch its household model, the largest project the organization had ever taken on at the time. An architect’s contract for \$1.2 million sat on the table, and the room went quiet. “Crickets,” Rodney remembers. No one wanted to make the motion. And then John did what John does: he gathered the room, brought people in, and helped them see past fear and into purpose. “He has been that one who has pushed us,” Rodney says, “but also comforted us.”

That blend, challenge paired with reassurance, is the thread that runs through John’s mentorship. He believes leadership grows when people feel safe enough to risk and grounded enough to keep going. He returns often to Disney principles, not as slogans, but as habits: think tomorrow; free the imagination; strive for lasting quality; have stick-to-it-ivity; and always, have fun.



By the time John stood to speak at his final board meeting, he had already been described in three words: friend, mentor, planner. He accepted that gratitude, then gently redirected attention to the deeper story—how far BRC had come. “BRC is at its best when,” John says without hesitation, “people cannot think of anything other than, ‘I’m having fun.’”

“36 years ago,” he told the room, “When I went into a meeting room in the basement of [Bridgewater] Home, the goal was to provide loving medical care for seniors in their final years.” He pauses. “I did not want to do that. My goal was to turn it around, so that others would be doing precisely what I thought when I walked in: look to this place to deliver—not just the magic, but a heart for caring and loving seniors.” The future he imagined wasn’t a place where seniors simply survive. It was a vibrant community where seniors could thrive—where innovation and creativity weren’t extras, but expressions of service. A place that “delivers the magic,” because excellence is one way you honor people.

And even as John steps off the board, he doesn’t speak like someone who is ‘leaving.’ He speaks like someone who is sending the story forward. “Am I gone?” he asks with a smile. “No. I continue to be an advocate and an ambassador. I challenge each one of you: dare to dream and make it happen. Always think about tomorrow. Free the imagination in your mind so it can happen for what potential can come.”

Soon, at the entrance of Culture U, a plaque will put words to what decades of leadership have already made clear: that John’s heart for people, belief in excellence, and commitment to culture have shaped BRC in lasting ways. And perhaps that is the most Disney thing of all—not that the story ends, but that it becomes something others can step into, continuing to invite people to dream.



# Nurturing OUR CULTURE

At BRC, culture is lived—not written. It's reflected in how team members serve residents, support families, and show up for one another every day. As we entered our 60th year, we continued to invest in our team, recognizing that a strong, aligned workforce is essential to delivering meaningful, person-centered experiences. This year emphasized building a shared understanding of values, expectations, and how teams work together across roles and the continuum.



## TEAM MEMBER DEVELOPMENT:

- **398** participated in *Grounded Training* (team development program centered on cultural norms and dementia training)
- **151** participated in *BRC Beginnings* (two-day orientation for all team members)
- **Over 5,000 hours** of team member training, collaboration, and connection in Culture U
- **17** internal promotions
- **12** participated in *Leadership Academy*
- **20** team members earned certifications and completed professional development or educational programs in their respective fields



## WORKFORCE DEVELOPMENT:

- **76%** retention rate
- **35 CNAs** and **4 Med-Aides** trained
- **162 clinical students** from Eastern Mennonite University, James Madison University, Massanutten Technical Center, and Valley Career & Technical Center conducted clinical rounds



## TEAM MEMBER WELL-BEING:

- Launched a **Student Debt Relief** Program as part of a commitment to supporting team members, with **nine participants** approved
- **Supported nine team members** during times of unexpected hardship through the **Work Well Fund**
- A **Work Well funded innovation grant** launched a walking pad program to support team member movement throughout the day



## 2025 SCHOLARSHIPS AWARDED: \$29,880

Juana Bangeniguen	Gaisey Cortez	Ethel Kimmell	Ashmah Niaz
Brenda Barb	Jamie Cyzik	Sarah Lutz	Alyssa Shank
Catherine Brubaker	Odesa Elezi	Sara McAlister	Angela Toland

*Plus, scholarships awarded through Rockingham Education Foundation, Harrisonburg Education Foundation, and Blue Ridge Community College.*

**Below:** Work Well donors attend the unveiling of local artist Tyler Kauffman's mural at Culture U. Made possible through donor support, the mural celebrates the spirit that defines BRC's culture.





## I want to take a moment to say thank you to my Bridgewater Retirement Community family.

Because of the Team Member Relief Fund and the generosity of my coworkers who support this program, I was approved for assistance that covered the remaining balance of my mother's funeral services. During one of the most difficult moments of my life, this support lifted an enormous weight off my shoulders.

This program truly shows what it means to be part of a community. It exists because team members care about one another and choose to help when someone is facing an emergency or hardship. I feel incredibly grateful and blessed to work alongside such compassionate people.

Thank you all for your kindness and support. I will always carry this with me.

—Juana, Team Member Relief Recipient





# Bringing Innovation

CLOSE TO HOME

In 2025, BRC brought innovation closer to home—strengthening how we support residents, source food, steward resources, and invest in campus infrastructure. As we marked 60 years of service, these efforts reflected a continued commitment to stewardship, community partnership, and forward-thinking practices that support people today while planning responsibly for tomorrow.

## Innovation in Action: Advancing Resident Health

In 2025, the Therapy Team advanced resident health through the development of an in-house Flexible Endoscopic Evaluation of Swallowing (FEES) program. Developed by Speech-Language Pathologists Patrick Massey and Abby Koller through a donor-supported innovation grant, the program provides on-site, evidence-based evaluations for swallowing and voice disorders—improving access and continuity of care for residents.



This is the coolest thing a speech therapist can do. I knew from the beginning that I wanted to be a medical SLP. And now we're doing something here at BRC that many therapists never get the chance to do.

—Abby Koller





## Good Roots: Bringing Food Closer to Home

BRC launched Good Roots this year, a values-based approach to food sourcing grounded in the belief that where food comes from matters—to residents, the local economy, and long-term sustainability.

That commitment translated into an investment of **\$36,261.45 in locally sourced food**, including Thanksgiving turkeys, local meats, and seasonal produce featured across BRC’s restaurants. Coupled with BRC’s seasonal Farmers Markets, made possible through donor support, it’s never been easier to enjoy good, local food right here at home.

Looking ahead, Good Roots will continue to grow with the addition of Farm Manager Price Crenshaw, who is laying the groundwork to begin producing food right here on campus in the Good Roots Garden.



Local does not typically save us money. It does, however, support our local community of farmers and growers, provide high-quality, in-season products to our residents, and encourage us to keep our menus fresh and seasonal.

—Jessie Shickel, Registered Dietitian



## Investing in Infrastructure That Supports Daily Life

Staying connected matters. A transition to Glo Fiber in the village significantly improved internet reliability, while expanded Wi-Fi access in assisted living and nursing households helped residents remain connected to family, resources, and programming.

Additionally, BRC continued investing in energy research, dedicating **\$28,820** to support operational efficiency and long-term stewardship.

## Reducing Waste & Preserving Resources

Sustainability efforts extend beyond sourcing—through continued composting, BRC significantly reduced landfill waste and made an environmental impact in 2025:

- **36.85 tons** diverted from landfill
- **15.48 metric tons** of greenhouse gas emissions avoided
- **92.48 cubic yards** of landfill space preserved



# Serving

## A GREATER GOOD

Our 60th Anniversary came with a challenge: to reach deep into the community and give back. We set a goal to achieve at least 60 acts of service throughout the year, but at a certain point, we just stopped counting. Here's where our residents and team members showed up to make an impact in the greater community.

### Supporting Seniors Across Our Greater Community

Our vision at BRC is to see healthy and vibrant aging across the entire Shenandoah Valley, and we're committed to doing our part to make that vision a reality. This year, we doubled our **Meals on Wheels** commitment to two delivery days per week, recognizing that consistent contact matters as much as consistent nutrition. When we hosted the **Walk to End Alzheimer's** on campus, more than 300 participants and donors raised over \$13,000—but the real impact was creating space where the wider community could gather around a cause that touches so many of our households. And with the support of

[Continued on next page]





## SERVING A GREATER GOOD

[continued]

an innovation grant from the BRC Foundation, we more than doubled the capacity for **Valley Program for Aging Services** to respond to emergency needs for older adults facing unexpected hardship.



## Standing with Neighbors Facing Hardship

Sometimes service means showing up where the need is most visible. This year, residents and team members served meals at **Open Doors** Navigation Center and organized donation drives for **Mercy House** to support individuals experiencing homelessness in our greater community. For Founder's Day, we launched a community-wide Day of Action that included **Habitat for Humanity** ramp builds, "Journey Bags" for foster children through **Blue Ridge Foster Love**, and Summer Comfort Kits for families without stable housing. At Thanksgiving, residents and team members filled and distributed Blessing Boxes through local early learning centers, making sure families had both food and essentials to celebrate the holiday.

## Showing Up for Students

When you live in a community surrounded by schools, you notice when kids are struggling. Our residents and team members expanded support for child food insecurity, delivering weekly food bags to students at **John Wayland Elementary** and partnering with **Mill Creek Church of the Brethren** to provide meals for more than 60 students at Peakview Elementary. Monthly volunteer shifts kept the work sustainable—residents sorting, packing, and delivering alongside team members who understood that full backpacks on Friday mean better focus on Monday. The intergenerational connections extended beyond food security: college students from **JMU** and **Bridgewater College** joined nursing residents for Dementia Friends training and **RAM Clinic** health information projects, while middle schoolers from **Wilbur Pence** discovered what hands-on service looks like when you partner with people who've been doing it for decades.



## Building Connection Through Presence

Service doesn't always look like labor—sometimes it looks like showing up and paying attention.

We partnered with The **Arc of Harrisonburg-Rockingham** to host the Thread of Inclusion Art Show, creating space for artists with disabilities to share their work. Residents launched **Connections Through Cards**, a creative outreach initiative focused on encouragement, and participated in Mosaic Challenges that engaged more than 60 individuals in support of **Oasis Studio**. We cheered on the **Harrisonburg Turks** at their Community Night, volunteered at the **Bridgewater Lawn Party** Bingo Tent, and hosted **Lifelong Learning Institute** classes in partnership with JMU. We

also “stocked the pantry” for the **Bridgewater Fire, Police, and EMS** to show our appreciation for the way they show up for us in our own moments of great need.

We stopped counting acts of service somewhere along the way, but not because we lost interest in the goal. We stopped because the question shifted. It's not “how many?” anymore—it's “who needs us to show up?” Our residents and team members proved something important this year: purpose doesn't end at retirement. It deepens. It multiplies. It shows up in food bags and greeting cards, accessibility ramps and rose bouquets, donations and presence. Sixty years taught us how to build a thriving community. This year reminded us that the best way to sustain one is to keep reaching beyond it.



# Living

## OUR BEST LIVES

Well-being at BRC is more than health—it's about creating shared experiences that enrich life at every stage. In our 60th year, we celebrated in style by bringing movement, creativity, and exploration to residents, team members, and the community that has supported us for six decades and continues to celebrate alongside us.



### The BRC Jesters

Lantz Chapel filled with laughter as the resident-led BRC Jesters debuted their Readers' Theater performance. Short, humorous plays inspired by everyday life created moments of shared storytelling, perspective, and plenty of smiles.



### Wiffle Ball

Built on a simple goal to get people moving during the day, wiffle ball quickly became one of the most talked-about moments of the year. With spirited commentary, good-natured banter, and a crowd of cheering residents, the Oasis transformed into must-see entertainment this summer.

### Adventure Club

From rail rides to ziplining, BRC's Adventure Club is proof that curiosity doesn't retire. These "why not?" adventures are shrinking bucket lists, growing memories, and adding fresh excitement to life in the Village.





## Smith Mountain Lake

Thanks to donor support, a second overnight trip to Smith Mountain Lake offered residents the chance to step beyond campus and enjoy a shared getaway. Laughter, stories, and connection made this year's adventure one to remember.



## Horticultural Therapy

Horticultural therapy, led by Carrie Budd, blossomed across campus with hands-on opportunities offered throughout the year. Workshops invited residents and team members to engage their senses and connect with nature, while a nature-based book club extended the experience beyond the garden.



## First Fridays

Through a partnership with the Arts Council of the Valley, BRC hosted First Fridays events featuring themes like Opening Minds through Art, Woodwerks, and Fiber Arts—welcoming residents and guests to celebrate creativity, culture, and community right here on campus.

## Under the Sea

Another unforgettable prom night transformed campus into an “Under the Sea” event, continuing a resident-favorite tradition made possible by the generosity of BRC donors.





# Honoring EXCELLENCE

BRC's dedication to providing the best senior living experience pays off—both in regional and national acknowledgments and accolades. Here are just a few ways we were recognized this year:



### Best of the Valley – Daily News-Record

- Best Retirement Company
- Best Nursing Home
- Best Assisted Living
- Best Company to Work For





**CELEBRATING 60 YEARS  
OF ENERGY FOR LIFE**



# BRC Foundation

BRIDGEWATER RETIREMENT COMMUNITY

Since its founding in 1983, the BRC Foundation has raised funds to support BRC's mission to care for residents who have exhausted their financial resources. As an autonomous organization governed by a separate board of directors, the BRC Foundation also supports on-campus programming, raises capital funds for major infrastructure projects, and provides support for team members with scholarship opportunities and emergency relief.

---

## 2025 BRC Foundation Board of Directors

Janessa Baker, Chair  
Anita Beckman, Vice Chair  
Ray Albers  
Robert Armbruster  
Heather Barkey  
Bill Blair  
Beth Driver  
Hattie Driver  
Beverly Eye  
Rufus Huffman  
Cindy Moyers  
Erin Rinaca  
Matt Robinson

Anonymous  
Stanley & Karen Abbot  
Bobby & Ellen Abernethy  
Frank & Joyce Aigner  
Raymond & Susan Albers  
Judith Miller Allen  
Marha Allen  
Robert & Linda Alley  
Charlie Angersbach  
Dinah Ansley  
Robert & Beverly Armbruster  
Eldon & Sandra Armstrong  
Jean Armstrong Estate  
Kathleen Armstrong  
Margaret E. Arnold  
Richard & Jane Arnold  
Mary B. Atkins  
Allen Baker  
Janessa Baker  
Heather & Eric Barkey  
Martha Barlow  
Mr. William O. Barnes  
Barbara Beam  
The Beaman Family  
Laten Bechtel  
James & Anita Beckman  
Cleve & Susie Benedict  
Benevity Causes  
Mary Lou Berkey  
Roger & Sonja Bible  
Dr. Charles & Mrs. JoAnn Bilbrey  
Fletcher & Kay Bingham  
Steve & Ann Bird  
Marion Bittinger  
Mary Ann Blaine  
Charles & Arvella Blair  
Martha R. Bloom  
David & Janet Bollinger  
Delmer & Sue Botkin  
Faye Bottenfield  
Bruce & Nancy Bowman  
Eleanor L. Bowman  
Jim & Sylvia Kline Bowman  
Ronald & Mary Bowman  
Ruth D. Boyers  
Chester & Nancy Bradfield  
Martha Bradfield  
Nancy R. Bradfield  
Bud & Jane Branch  
Judith K. Breeden  
George Brenneman  
Robin Brown  
W. Richard Brown & Kathleen Siker  
Peggy Sue Bryan

Gretchen Buddenhagen  
Yvonne Burgers  
Bruce & Jean Burkholder  
Louise R. Burtner  
Michele Bushnell  
Sam & Sherry Butler  
Flora H. Byrd  
Henry & Rose Campbell  
Larry & Angie Caplinger  
Betty Caricofe  
Patricia Carroll  
Leonard Carter  
Joanie Cassens  
Dianna Chandler  
Lee & Peggy Chapel  
Sherrill Cheeks Estate  
Leah Chenette  
Doug & Julie Chismar  
Mary Clanahan  
Curtis & Betty Coffman  
Bloomerang Company  
Sally Jane Conner  
Judy Cason Cook  
Melba S Atkinson Cook  
Virginia Coppedge  
Glenn Alexander Costie  
Patricia S. Costie  
Elsie Cox  
Allen Cramer  
Gary & Susan Creasy  
Terence H. Crowgey  
Benny & Cathy Cupp  
Mr. Wayne Cupp  
Jeffrey & Faye Curl  
Nancy Dagen  
Kevin & Joan Daggett  
Thomas & Joy Daggy  
Jack & Ellen Davenport  
Bryn R. Davis  
D. Miller & Connie Davis  
Charles Dean  
Mensel & Linda Dean  
Darla Deardorff  
Glenda M. Deaton  
Margaret K. Dent Estate  
Carolyn Dickenson  
Laura Dodd  
Anonymous Donor  
Betty Bryan Dove  
Dr. Garner & Mae Downey Estate  
Hattie Driver  
Rebecca V. Driver  
Dutt & Wagner of Virginia, Inc.  
Shawn Eller

Rev. Wendell & Sonya Eller  
Robert B. Emswiler  
Dawn T. & George R. Erdman, II  
Karen Erickson  
Kenny W. & Sandra S. Ervin  
Kaye Estep  
Evans Driver PLC  
Karen V. Evans  
L. Kathryn Evans  
Mark & Teri Everett  
Karen H. Ewing  
Beverly & Terry Eye  
Glen Eye  
David M. Faris  
Greg & Jolene Farrar  
Richard & Janean Fawley  
Rev. Earle W. Fike Jr. Estate  
J. Michael & Cynthia Fike  
Everett Fisher  
Gail Fisher  
Jessica Fisher  
Julian Fisher  
Richard & Elizabeth Fitt  
Wallace & Virginia Flatgaard  
Jeffrey & Laura Fleishman  
James & Ann Flora  
John & Jan Flora  
Wanda M. Flora  
Theodore & Mary Beth Flory  
Donald & Polly Fravel  
Dace Freivalds  
Gregory S. Fulk  
Richard & Patsy Fulk  
Harold Furr  
Carole Gaines  
Corinne Gaines  
Lelia Lightner Galvin  
John & Marilyn Garber  
Mr. & Mrs. Douglas Gardner  
Norma Gardner  
Sandra Gardner  
Nancy Garner  
James & Phyllis Gaskins  
Diane Gasper  
Gregory W. Geisert  
Phil & Elizabeth Gentry  
Charles J. Gerard  
Karen Gerard & Matt Bingay  
J.D. & Becky Glick  
Mr. Ray & Mrs. Sandra Glick  
Doug & Rhonda Gordon  
Juliana Graham  
Paul Graham  
Roy Gray

Susan & Mike Del Grosso	Alan & Jean Kegg & Keith & Lisa Carpenter	Stephanie V. McNeill	Sharon & Dale Reeves
Diane H. Guzzi	Richard & Betty Keller	Ann Marie Menard	James & Joann Reid
Gordon Hall-Wurst	Albert & Nona Kellogg	George & Juanita Mendenhall	William & Virginia Reinhold
Patrick Hall-Wurst	Betsy Kennedy	Rick & Pauline Messier	John & Sherry Reisbig
Alex Hamill	Charlotte Kenney	Jane Metheny	Robert L. & Carol Kim Retka
Jane K. Hammond	Nancy Still Keplinger	Maynard A. Michael	Charles & Sue Rexrode
Christa K. Harrell	Charles & Dawn Kern	Dawn Elizabeth Miller	Linda Ridder
Doris Harsh	Susan Kidd	Ernie & Marilyn Miller	Bonnie L. Riggleman
Linda Harter	Deborah S. King	Frances B. Miller	Rosemarie Riggleman
Niles & Kay Harvey	Sharon Kiracofe	James & Linda Miller	Edward Rinaca
Greg Hawkins	J. Kenneth & Linda Kline	Janice Kathryn Miller	Lynn Riner
Henry & Loretta Hawkins	Robert & Sarah Kloetzer	John & Mary Miller	Martin J. Ritchie
Mary Hawkins	Fred & Diana Knight	Pauline G. Miller	Michael & Margaret Robison
Whit & Cheri Hawkins	Walter Knox	Saraona F. Minnich	Clooney Rodeffer
Ann & Bob Healy	Terri Konort	Barry & Connie Minnich	William & Tammie Rodgers
Betsy Hedrick	Mary Beth Kuebler	Donna L. Mitchell	Gloria Roller
John & Brenda Hedrick	William B. Kyger Jr.	Tom Mizell	Kenneth Blair Roller
Larry & Nancy Hedrick	Joanne Lam	Wanda S. Moad	Anne M. Ross
Galen & Inge Heisey	Anita H. Landes	Lavern P. Moffat	Michael R. Ross
Kathi Hemmis	Craig & Theresa Landes	Kirby Moir	Kennon V. Rothchild Estate
Judith Henneberger	Don & Carole Landes	John & Ann Monger	Doyle & Darlene Rounds
Bingham W. Higgins & Susan E. Greene-Higgins	Herman & Charlotte Landes	Sherry L. Mongold	Kimberley Rousseau
Rodney & Gloria Hildebrand	Paige Landes	Katharine Moore	Jean Ruff
Dick & Barbara Hite	Sonny G. & Lisa D. Lasam	Samuel & Beverly Moore	Blaine & Judy Ryman
Virginia C. & Thomas J. Holden III	Larry & Pat Lawhorn	Barbara K. Moyers	B. Franklin & Ann Salyards
Brent & Karen Holl	Doris Lawrence	Eugene & Pam Moyers	Kim & Rick Schlabach
Linda & Richard Holte	Erin E. Layman Esq.	Terry & Diane Murray	Jeffrey & Patty Schleifer
Dr. Wallace & Eleanor Holthaus	Glen & Katherine Layman	C. Carter Myers	Susan Schuckman
George & Ann Homan	Dave & Ann Leatherwood	Roger S. Myers	Charles H. Scott
Linda S. Hoover	James L. Leeth	Rev. John & Linda Neff	Nancy A. & Richard E. N. Sedwick, M.D.
Dr. Jesse & Alice Lee Hopkins	Julie Leitner	Dianne Nelson	Cathryn F. Seese Estate
Gloria R. Horne	Ann Marie Leonard	Darlene Newman	John H. & Faye T. Sellers
Michael Hostetter & Nancy Cherniss	Jordan Gaines Lewis	Anne W. Nielsen	Libby Sellers
Sharon Hottel	Warren Lewis	Wilfred & Joyce Nolen	Fred & Helen Shank
Dwight E. Houff	David & Lorraine Lineweaver	Sue Overman	Judy & Barry Shapiro
Kern & Chanda Houff	W. Price Lineweaver	Peggy & John Packard	Jeffrey & Ann Shawver
Neil & Sara Houff	Jeffrey Liskey	Jane Parker	The H. G. Texiere Family
Hon. W. Dale & Meredith Houff	Mary Ann Littrell	Stephen & Shirley Parsons	Nelson W. (+) & Martha Lou Sheets
Susanne Houghland	Margie S. & Omer M. Long, Jr.	Lynette Patterson	W. Keith & Jennifer Sheets
Paul & Mary Ann Hoyt	James A. Longenecker	Rebecca Payne	Jonathan Shenk M.D.
Harold E. Huffman Estate	Richard E. & Deborah L. Lopez	Debra Pelikan	Gary & Rebecca Shickel
Rebecca Huffman	Mary C. Ludwick	Larry & Jane Pelletier	Helen W. Shickel
Rufus & Elaine Huffman	Doris M. MacDaniel Estate	Mrs. Janice Pence	Mark A. Shifflett & Rebecca R. Hill-Shifflett
Nancy & Tim Hulings	Haruyo Mack	Jonah & Fern Pence	Charles C. Shiflet Jr.
Cappie Hull	Ralph & Alice MacPhail	D. Jean Petre	Donald Shiflet
Georgianne & Lyle Hull	Linda Magalis	Marilyn W. Phibbs	Helen Shiflet
Melodie S. & James R. Humphreys	Paul & Suellen Maneely	Richard & Eileen Phillips	Karen Shiflet
Michael & Gail Hunt	Laura S. Mapp	Dan & Stephany Plecker	Eric & June Shipplett
Jim Carter & Pam Hunt-Carter	Rebecca Martin	Kim & Bill Poore	Aaron & Jennifer Shirkey
Lee & Andrew Jackson	Rod & Sandy Martin	O. M. Porterfield Jr.	Kenneth & Sue Showalter
John & Helen Jarrels	Claire Martindale	Edward & Judith Powell	Elwood A. Shrader
Bob Jochen & Chris Smith	George L. Mason	Larry & Linda Powell	Catherine T. Simmons
Edwin & Dona Johnson	Herman & Janet Mason Families Fund	Nan M. Powell	Linda Simmons
J. Robert & Patricia Johnson	The Marion E. Mason Family	Carolyn Price	Sue Simmons
Judith Jones	John H. Mason	Edmund & Deborah Price	William L. Simmons
Ronnie Jones	Peggy G. Mason	Kristen Printy	George Simpson
Joseph & Diana Eneyd	Jack & Mary McAvoy	Jim & Brenda Puffenbarger	T. Edgar & Zizi Sipe
Gayle & Hester Judy	Roger & Sharon McCafferty	Carol Rabian	Linda Sites
Clayton & Marsha Justice	Thomas J. & Linda G. McCaughey	Garrett Rabian	Terry & Vickie Slaubaugh
Bill & Charlotte Kagey	Joel "Mac" & Beverley McCauley	Janice Rabian	Patricia & J. Michael Slocum
James M. Kagey	Mark & Jan McGowan	Lynn Reams	Doris Slusser Estate
James L. Keeler		Elizabeth Reese	
		Richard & Maralee Reeves	

Ed & Betty Smith  
 Melinda Smith  
 Jeffrey E. Snelson  
 Catherine Snyder  
 Charles L. Snyder III Estate  
 Elizabeth H. Snyder Estate  
 Barbara R. Somers  
 Wayne & Carol Spangler  
 Michael Squires  
 Philecta Staton  
 Janet S. Stepp  
 Robert & Diane Stevens  
 Barbara B. Stoltzfus  
 John & Toni Stone  
 Dr. Phillip & Cherrill Stone  
 Ginny V. Straub  
 Rich & Leslie Sturges  
 Rhonda & Craig Stutzman  
 Garnet Suiter  
 Teri R. Sumey  
 Michael S. & Dana C. Suter  
 Rev. Fred & Nancy Swartz  
 Dr. Ned Swartz  
 Todd & Loree Swegle  
 Dwight F. & Betty A. Swope  
 Julie A. Swope

Linda S. Tanguay  
 Penny Tate  
 David & Constance Taylor  
 Gerald & Susan Taylor  
 Jennifer Taylor  
 Susan A. Thacker  
 Charles & Donna Thompson  
 Paula L. Thompson  
 Susan Thompson  
 Earl & Margaret Thornton  
 Tom & Lori Mendez  
 Warwick Tomfohr  
 Rev. James Tongue  
 P. David & Mardi Trout  
 Terri J. Tucker  
 Jeannie L. Turner  
 Cynthia A. Tusing  
 Paul P. & Martha A. Vames  
 Karl & Robin Vaughn  
 Lucile H. Vaughn Estate  
 Janice W. Wade  
 Donald & Estelle Wagner  
 Carolyn Wampler  
 Charles Wampler  
 Frederick & Joyce Wampler  
 Gina L. Wampler

Glenna Wampler  
 Jodie E. Wampler  
 Priscilla Wakeman Wampler  
 Madison Wardell  
 Eileen Waterhouse  
 K. Craig Waters  
 W. Steve & Ruth Watson  
 W. Todd & Shannon Watson  
 Michael & Janet Weeks  
 Renee Wenger  
 John M. West & Linda A. Elliott  
 Shirley Western  
 Thomas M. Wetsel  
 Tom & Nancy Wetsel  
 Robert & Karen Wheatley  
 Tom & Marnie Wheatley  
 Larry & Amy White  
 Blanche C. Whitesell  
 Mary Whitley  
 Sharyn D. Wichael  
 Dr. Richard T. Wilfong  
 Richard & Pamela Wilkins  
 N. Paige & Ann Will  
 Sarah P. & G. William Willman, III  
 Howard & Nancy Wilson  
 Anna Marie & Claude T. Wilton

C. Douglas & Linda Wine  
 Richard & Judith Winner  
 Robert & Nancy Wiskeman  
 Donna Wojciechowski  
 Barbara M. & J. Edward Wood  
 Wayne Wood  
 Nancy R. Woody  
 Lisa Wright  
 Robert & Dorothy Wright  
 Merv & Mary Wunderlich  
 John Wurst  
 Margaret & Richard (†) Wurst  
 Mr. & Mrs. John Wurst  
 Richard Wurst  
 Ron & Leona Raines Wyrick  
 Bernard H Yancey  
 Judith Yates  
 Sumiko Yourtee  
 John Zban  
 Vicki & James Zerkel  
 Fred & Katherine Zimmerman

(†) = deceased



## Home No Matter What

Living at BRC gives residents the security of knowing that, should their needs change, they'll always have access to supportive services and world-class healthcare. And that's true no matter what. Approximately one-fourth of residents in Assisted Living, Memory Support, and Nursing Households have exhausted their financial resources. The Forever Family Endowment bridges the gap—ensuring that all residents can continue to remain in their homes for the rest of their lives regardless of their ability to pay.

### Percentage of residents not able to pay the full fee:

**ASSISTED  
LIVING:**  
25.8%

**MEMORY  
SUPPORT:**  
15%

**NURSING  
HOUSEHOLDS:**  
19.2%

You can help keep our Home No Matter What promise by making a contribution to the Forever Family Endowment. Learn more at [brcliving.org/brc-foundation](http://brcliving.org/brc-foundation).

## Giving by BRC Team Members

Anonymous	Sara L. McAlister
John Adkins	Lawana Meadows
Rodney D. Alderfer	Kemberly Melton
Mary Kate Allanson	Diane H. Metzler
Florence Alonzo	Kayla Cook Meunier
Bradley Anderson	Zane Michael
Fiona Anderson	Alison Miller
Brenda S. Barb	Amy R. Minnick
Russ Barb	Buffy Mitchell
Yvette Benson	Haggi M. Molalenge
Sheila M. Bowman	Cindy Morris
Crystal G. Boyers	Rachel Morris
Michael D. Bragg	Kevin Nelson
Angela Bridges	Anne M. O'Donohue
Carolyn S. Budd	Alice Over
Robin Campbell	Heidi Painter
Lauren Carper	Maria Partlow
Faith Cayton	Lori Patterson
Rebecca Chittum-Burkholder	Karyn Posey
Lorie Cole	Laura Ipock Powell
Rhonda K. Collins	Angie Pyles
Jocelyn Conner	Kenzie Ragland
Katherine Conner	Dana R. Ramsey
Krista McKean Cople	William Rapisardi
Easton Davis	Christopher Rathbun
Christine S. Darrow	Lauren Reeves
Michele S. Dodrill	Jill Rhodes
Jeremy Douylliez	Daniel F. Ritchie II
Jennifer Dove	Felicia D. Ritchie
Peggy A. Estes	Julia A. Ritchie
Jessica Fisher	Rachel Ruth
Anne Whitney Flint	Mary Jo Saufley
Anne-Margaret Frazier	Donovan Schmude
Devon F. Gooden	Alyssa Shank
Shirley Gooden	Derick Shank
Amanda Harpine	Joel Shank
Deborah Harter	Dreamia D. Sheffer
James Hartman	Priscilla S. Sheffer
Todd Hassett	Teresa Sheffer
Ashlie Heatwole	Pamela S. Sherman
Holly M. Heatwole	Lisa Gray J. Shickel
Makayla Hensley	Karen Shifflett
Emily S. Hinkle	Lindsey Shifflett
Katie Howdyshell	Amanda Shrader
Lauren Jones	Cheryl D. Smith
MaLinda Jones	Katelyn Smith
Tammy J. Jordan	Tammy Souers
Ethel Kimmell	Laura C. Spicer
Kristin Knight	Robin M. Spitzer
Nancy Knight	Betty Staubus
Anna Philippa Krot	Melissa L. Stover
Susan S. Kuykendall	Ashley Strawderman
Jeffrey W. Lambert	Jeannette Suter
Brian Landes	Cameron F. Tolley
Lisa Landes	Christine Trobaugh
Jayne Liskey	Lura R. Trout
Catherine Lissa	Jessica Via
Regina Lonas	Wanda Wampler
Lacey Lucas	James A. Weaver
Jared L. Lunn	Ann Weese
Sarah Lutz	Salena Weese
Annette Marshall	Adam Wright
Michael Matchinski	Barbara Zombro
Emily Mawyer	

121

Team Member  
Donors

31%

Workforce  
Participation

\$22,428

Total Gifts

## THE BVRA *Gives Back*

The **Bridgewater Village Residents Association (BVRA)** makes a meaningful impact on BRC and the broader community through fundraising and charitable donations under the leadership of:

**President:** Bill Reinhold

**Immediate Past President:** Fred Swartz

**Co-Vice Presidents:** Ann and Paige Will

**Secretary:** Cindy Fike

**Treasurer:** Mike Fike

**Representatives to the Board:** Paige Landes and Marty Barlow

### INCOME

**\$94,459.14**

The Village Barn Sale

\$93,311.14

Donation Income

\$1,148.00

### EXPENSES

**\$66,198.5**

Bridgewater Fire Department Donation

\$16,000.00

Bridgewater Rescue Squad Donation

\$16,000.00

BRC Foundation Donations  
(Forever Family Endowment, Energized Life Fund, & Spiritual Life Endowment in memory of residents who passed)

\$16,750.00

Library Committee (new books purchased for May Meadows Library)

\$1,024.64

New Resident Recognition (welcome gifts & receptions for new residents)

\$1,954.29

Social Committee

\$11,544.04

New Portable PA Sound System  
(in partnership with BRC Administration)

\$2,000.00

Funded TAG's Start-up Costs

\$925.53

# Impact through Volunteer Service

## Individual Volunteers

Stanley Abbot	Pat Brown	Dennis Early	Tatum Gyllenhoff	Ellen Layman
Sara Acevedo-Bonilla	Elizabeth Bryan (t)	Elizabeth Emswiler	Tom Hall	Julie Leitner
Mary Kay Adams	Mackenzie Buckley	Janie Endres	Anna Mae Harmon	Ann Marie Leonard
Ray Albers	Emily Burnett	Bev Eye	Amanda Harris	Donald Lewis
Susan Albers	Skylar Buzbee	Bill Faw	Doris Harsh	Margarita Lewis
Gabriella Alvarado	Martha Canada	Martha Faw	Beth Harter	James Longenecker
Giana Anastasi	Betty Caricofe	Konnor Fellenstein	Lizzy Healy	Joy Loving
Ann Anderson	Krystal Carnahan	Nayelis Ferner	Betsey Hedrick	Nina Luces
Ervin Anderson	Linda "Casey" Carter	Mike Fike	Kathi Hemmis	Kathy Lutz
Alyssa Antolin	Donna Cason	Cindy Fike	Aretha Henderson	*Doris MacDaniel
Jeff Arbogast	Dianna Chandler	Julian Fisher	Judith Henneberger	Ginger MacNaughton
Bob Armbruster	Douglas Chismar	Elizabeth Fitt	Pat Hensley	Jack Mcavoy
*Jean Armstrong	Julie Chismar	Ann Flora	Gloria Hildebrand	Mary Mcavoy
Kaylee Arney	Michael Chumbley	Jan Flora	Rodney Hildebrand	Roger McCafferty
Janessa Baker	Sally Chumbley	Wanda Flora	Barbara Hite	Sharon McCafferty
Heather Barkey	Miriam Clark	Pam Flory	Hannah Hoffmann	Aidan Medrano
Marty Barlow	Shirley Cockrell	Thomas Flory	Sydney Hole	George Mendenhall
Emma Basham	Barbara Colson	Jane Fulk	Brent Holl	Juanita Mendenhall
Brenda Beach	Emma Compton	Lelia Galvin	David Holl	Savannah Merrill
Laten Bechtel	Sarah Cook	Karen Garner	Alice Lee Hopkins	Grace Metzger
Anita Beckman	Gayle Corrado	Jim Gaskins	Darrel Hostetter	Elena Middleton
Julia Benedetti	Megan Cossaboon	Phyllis Gaskins	Michael Hostetter	Mary Miller
Roger Bible	Peggy Counts	Charles Gerard	Nancy Hostetter	James Miller
Fletcher Bingham	Elsie Cox	Doug Gilbert	Sue Houghland	Mary Lou Miller
Kay Bingham	Paige Cramer	Sharon Gilbert	Charlotte Hoyle	Tom Mizell
Bill Blair	Gary Creasy	Hayden Gilpatrick	Harold Huffman (t)	Kathryn Monaghan
Isabelle Bolyard	Susan Creasy	Carle Gomez	Rufus Huffman	Sherry Mongold
Jim Bowman	Makenzie Cyzick	Zoya Gorani	Rebecca Huffman	Bev Moore
Jo Ellen Bowman	Nancy Dagen	Paul Graham	Nancy Hulings	Carol Moore
Sylvia Bowman	Riley Daher	Ellie Grant	Tim Hulings	Samuel Moore
Ruth Boyers	Carolyn Davis	Chloe Gray	Gail Hunt	Lea Moyer
Nancy Bradfield	Lizzie Diederich	Melissa Gray	Greg Jaccard	Cindy Moyers
Bud Branch	Ashley Dietz	Heather Groel	Andy Jackson	Eugene Moyers
Jane Branch	Kay DiVincenzo	Joyce Grove	Lee Jackson	Pam Moyers
Charlotte Brazeau	Sydney Dove	Carol Grove	Holly Jacobs	Mckenna Mueller
Tony Brazeau	Dr. John Downey	Barbara Grunder	Rebecca Jett	Dawn Murray
George Brenneman	Beth Driver	Kathy Guisewite	Robert Jochen	John Neff
Kim Brenneman	Hattie Driver		Edwin Johnson	Mackenzie Nicholson
			Catherine Johnson	Anne Nielsen
			Nancy Keplinger	Joyce Nolen
			Sallie Kiser	Wil Nolen
			Robert Kloetzer	Ashley Nugent
			Vickey Kloetzer	Wyatt Ouren
			Katie Kron	Sue Overman
			Mary Beth Kuebler	Angel Park
			Cassandra Kulisan	Shirley Parsons
			William "Bill" Kyger	Steve Parsons
			Joanne Lam	Anjali Patel
			Vicky Lambert	Brenda Patterson
			Olivia Lambert	Ashley Pellegrini
			Craig Landes	Madison Peluso
			Paige Landes	Jonah Pence
			Emily Larson	Carol Perkuichin
			Hannah Lassiter	Rex Peters
			Scott Lawhead	Ruth Peters
			Doris Lawrence	Jean Petre



### Team Appreciation Gift (TAG) Program:

A resident-led initiative inviting residents, families, and guests to express gratitude to BRC team members (excluding senior leadership). Contributions were collected throughout the year, with \$59,595 distributed to 469 team members in November.

*"This year held its challenges, and receiving something this thoughtful felt like an absolute Christmas miracle. Your kindness landed right where it was needed most."*

—Anonymous

## 2025 Group Volunteer Organizations

ARC of Harrisonburg / Rockingham  
 Augusta Health  
 Barbara Redrode Guitar Trio  
 Blue Ridge Christian School  
 Blue Ridge Community College College  
 Blue Ridge Mountain Dulcimers Club  
 Bridgewater College- Women's Soccer  
 Bridgewater College- Department of Music  
 Bridgewater College- Health and Exercise Science  
 Bridgewater College- The Screaming Eagles Band  
 Bridgewater College- Women's Field Hockey  
 Bridgewater College- Women's Softball  
 Bridgewater Church of the Brethren  
 Bridgewater Mennonite Church  
 Bridgewater Presbyterian Church  
 Bridgewater United Methodist Church  
 Bridgewater United Methodist Youth  
 Bridgewater VFW  
 Cardinal Dental Specialist  
 Cards with Love  
 Clover Hill Church  
 Connections Early Learning Center  
 Eastern Mennonite University  
 Fort Defiance High School  
 Friendly City Florals  
 Good Time Gospel Quartet  
 Harrisonburg First Church of the Nazarene  
 Helping Hands Camp  
 Hickory Hollow School  
 In Motion School of Dance  
 James Madisin Univrersity- Alternative Spring Break  
 James Madison University - Alpha Phi Omega  
 James Madison University - Line Dancing Club  
 James Madison University- Social Work  
 James Madison University- Duker Make a Difference  
 James Madison University- Health Services Administration  
 James Madison University- School of Art and Design  
 James Madison University- School of Nursing  
 James Madison University- University Choir  
 JMU Lifelong Learning  
 John Wayland Elementary  
 Karen Waldron Family  
 Laura, Sandy & Marilou Music  
 Mason Street Brass Band  
 Massanutten Resort  
 Massanutten Technical Center  
 Montezuma Church of the Brethren  
 Mount Pleasant Youth Group  
 Murphy Demming College of Health Sciences  
 New Beginnings Church  
 New Hope Chorus  
 Nickel Plate Brass Band  
 Peak Mennonite Church  
 Renewed Minds Homeschool  
 River's Bend Trio  
 Shenandoah Valley Dulcimers  
 Skyline Church  
 Spotswood High School- Tri-M Music Honor Society  
 Summit Church of the Brethren  
 The Highlander Band  
 The Threshold Choir  
 The Vocal Chords  
 Therapy Dogs International  
 Turner Ashby High School  
 Turner Ashby High School National Honors Society  
 USA Dance Team  
 Valley Program for Aging Services  
 Wilbur Pence Ruriteens  
 Ynots

Judith Phillippi	Matt Robinson	Nelson Sheets	Daniel Stogdale	Rose Wells
Belinda Phillips	Margaret Robison	Sam Shickel	John Stone	Renee Wenger
Lloyd Pollitt	Mike Robison	Don Shiflet	Toni Stone	Katelyn Weppner
Neil Porter	Jeanelle Robledo-Estremera	Karen Shiflet	Kent Stoneburner	Shirley Western
Mary Porter	Gloria Roller	Helen Shiflet	Katelyn Stoner	Marnie Wheatley
Bill Powell	Lauren Rossi	Jennifer Shirkey	Richard Stutzman	Tom Wheatley
Edward Powell	Trinity Rucker	Carolyn Shorb	Fred Swartz	Cindy Wheelbarger
Eunie Powell	Jerry Ruff	Jerry Shorb	Nancy Swartz	Linda White
Judith Powell	Blaine Ryman	Ann Siciliano	Peggy Thomas	Lizzie Whitten
Larry Powell	Judy Ryman	Kathleen Siker	Paula Thompson	Anyka Wilkin
Carolyn Price	Morgan Sadowski	Haeley Silan	Karly Thurman	Ann Will
Sam Puffenbarger	Bill Sale	Kathy Simmons	Michelle Titman	Paige Will
Karen Reed	Donna Sampson	Nancy Simmons	Jackie Towers	Kathryn Wilvert
Chloe Rehm	Gene Sampson	Sue Simmons	Katie Urbanic	Judy Winner
Ginnie Reinhold	Jeffery Schleifer	Chris Smith	Hannah Van Horn	Richard Winner
William "Bill" Reinhold	Mia Schuddeboom	Linda Snader	Ann VanPelt	Julia Woolston
Tom Reynolds	Dylan Schwarting	James Snyder	Janice Wade	Haley Wright
Rachel Reyns	Justin Scott	Carol Spangler	Glenna Wampler	Mary Wunderlich
Ben Ridder	Carole Sease	Linda Sterrett	Joyce Wampler	Merv Wunderlich
Jeff Ritchie	Bonnie Semans	Diane Stevens	Susan Warren	Margaret Wurst
Diane Ritchie	Dorothy Sharpe	Cathie Stivers	Ruth Watson	Payton Zampiello
Julianna Rivera	Abe Shearer	Barbara Stogdale	Steve Watson	Rowan Zeiss
Evelyn Robins	Martha Sheets			

## Civic and Business Support

Anonymous  
American Legion Post #188  
Bridgewater Village Residents' Association  
Campbell Print Center  
City National Bank  
City National Bank of West Virginia  
Dominion Energy Charitable Foundation  
Everence Foundation, Inc.  
Farmers & Merchants Bank  
Flora Pettit

Green Valley Auctions & Moving, Inc.  
Houff Charitable Foundation  
Houff Corporation  
Houff Family Foundation  
Landes Heating & Air Conditioning  
Kenneth Martin  
McGaheysville Ruritan Club  
Park View Federal Credit Union  
Partners Excavating Company

Hipps Financial Partners  
Shickel Corporation  
Sons of the American Legion  
The Community Foundation-Harrisonburg and  
Rockingham County  
The Darrin-McHone Charitable Foundation  
The O'Connor Group  
Trumbo Electric, Inc.  
Zella Gahagen Trust

## Church Partners

Anonymous  
Beaver Creek Church  
Bethel Church of the Brethren  
Bethel Community Church  
Brethren of Mountain Grove Church  
Bridgewater Church of the Brethren  
Cedar Grove Church of the Brethren  
Cedar Grove COB Women's Fellowship  
Cedar Run Church of the Brethren  
Charlottesville Church of the Brethren  
Emmanuel COB-Women's Fellowship  
Flat Rock Church of the Brethren  
Forest Chapel Church of the Brethren

Friendship Sunday School Class  
Hiner Church of the Brethren  
Luray Church of the Brethren  
Mill Creek Church of the Brethren  
Montezuma Church of the Brethren  
Mount Bethel Church of the Brethren  
Mount Olivet Church of the Brethren  
Mt. Carmel Church of the Brethren  
Mt. Pleasant Church of the Brethren  
Mt. Zion Church  
Mt. Zion Church of the Brethren-Luray  
Pathfinders Sunday School Class  
Pine Grove Church of the Brethren

Round Hill Church of the Brethren  
Sangerville Church of the Brethren  
Shiloh Church of the Brethren  
Smith Creek Church of the Brethren  
Staunton Church of the Brethren  
Sunrise Church of the Brethren  
Timberville Church of the Brethren  
Valley Friends Meeting  
Valley Pike Church of the Brethren  
Wakemans Grove Church of the Brethren  
Wakemans Grove COB Men's Fellowship  
Waynesboro Church of the Brethren

## Legacy Council Members

Anonymous  
Judith Miller Allen  
Roger L. & Sonja A. Bible  
Emmert (†) & Esther L. Bittinger  
James O. & Sylvia K. Bowman  
Dick L. Boyd  
Chester L. & Nancy B. Bradfield  
Daniel W. Brubaker (†)  
Allen M. Clague Jr. (†)  
Patricia S. Costie  
Gary W. & Suan M. Creasy  
Linda & Mensel D. Dean Jr.  
Margaret K. Dent (†)  
Janice Drechsler  
Hattie Driver  
Theodore W. & Mary Beth Flory  
Thomas Flory  
John R. & Marilyn B. Garber  
Kathleen Gardner  
Karen Garner  
Janet W. Good

Wilda W. Holsinger  
Paul A. & Mary Ann Hoyt  
Dr. Rufus C. & Elaine W. Huffman  
Tim & Nancy Hulings  
Kevin D. Humphries  
Gail L. Hunt  
Barbara H. Jewell  
Robert Jochen & Christopher Smith  
Sallie E. Kiser  
Pearl L. Lantz  
W. Price Lineweaver  
Mary Ann Littrell  
Paige D. Martindale  
Marion (†) & Joan (†) Mason  
Roger & Sharon McCafferty  
Joel & Beverly McCauley  
Karen P. McNeal  
Dawn Elizabeth Miller  
Janet Carter Miller (†)  
Janice Kathryn Miller  
Mary Lou Miller

D. Jean Petre  
Carolyn B. Price  
Richard & Maralee Reeves  
Kennon V. Rothchild (†)  
William & Josie Sale  
Jeffrey & Patty Schleifer  
Donald & Donna (†) Shiflet  
Catherine T. Simmons  
Terry G. & Victoria G. Slaubaugh  
Fred W. & Nancy C. Swartz  
Paula L. Thompson  
Gary L. & Marcia E. Tyeryar  
Ann E. VanPelt  
Janice W. Wade  
Glenna Wampler  
Priscilla Wakeman Wampler  
W. Steve & Ruth C. Watz  
John E. & Gene White  
N. Paige & Ann C. Will  
Gladys B. Wonderley

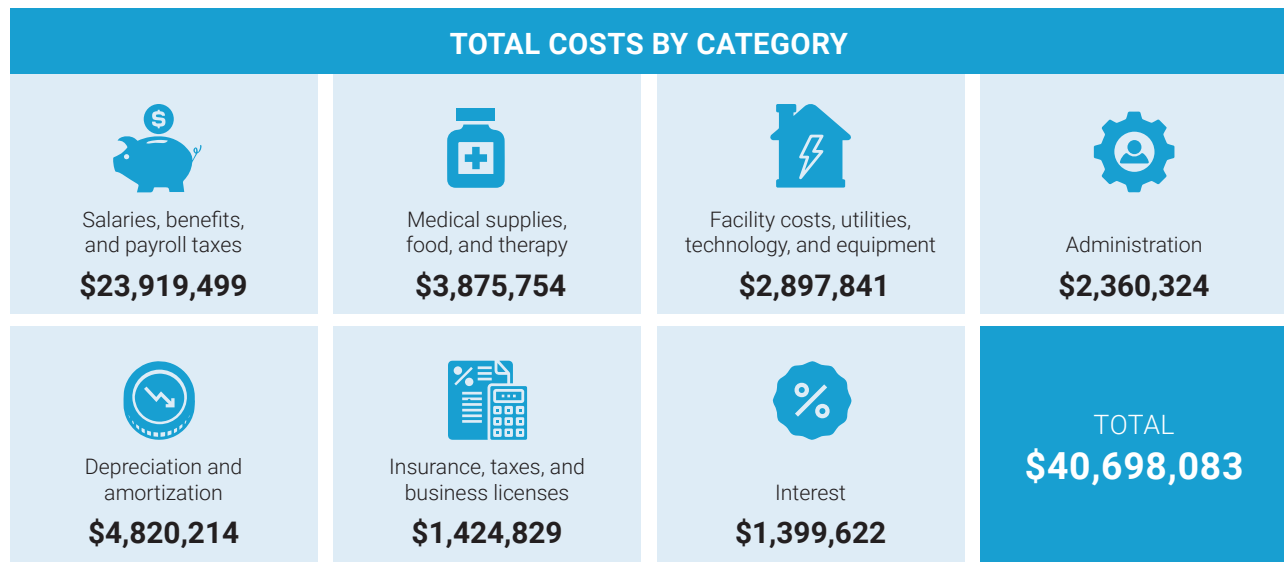
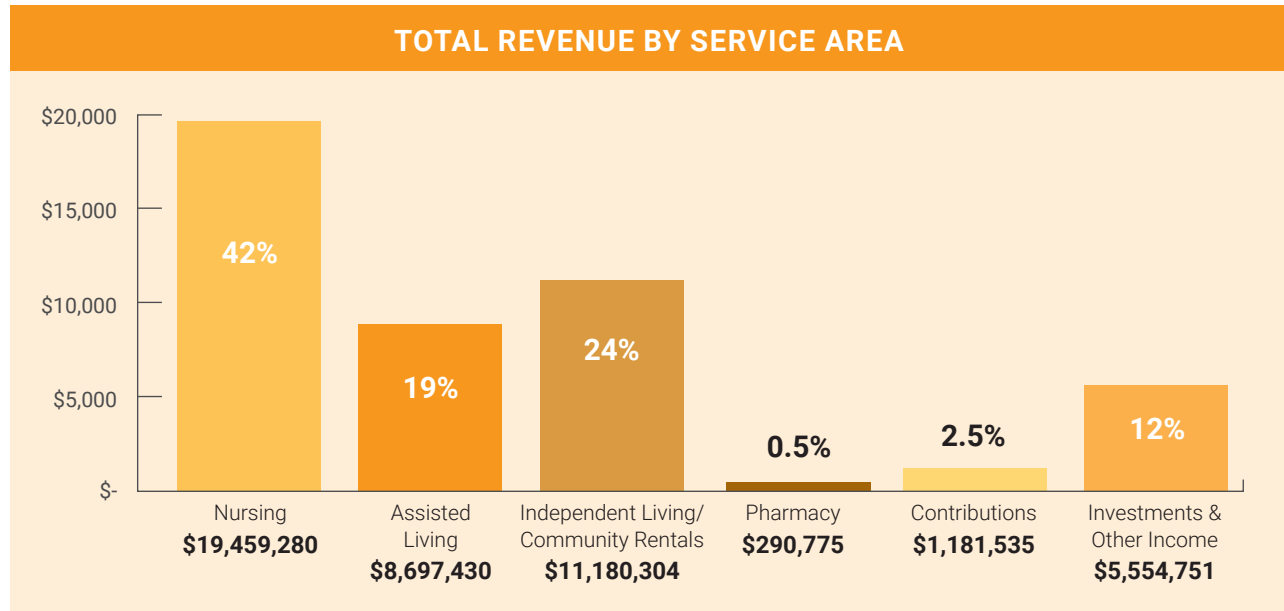
(†) = deceased



**The BRC Foundation, and the entire Bridgewater Retirement Community, deeply appreciate the contributions of each donor and volunteer. We have made every effort to make these lists complete and accurate. If you notice a mistake or an omission, please accept our apologies and contact us at 540-828-2652.**

# 2024-2025 Financial Dashboard

Contributions and income from investments are crucial in bridging the gap between revenue and operating costs in each of our service areas.



\*Bridgewater Retirement Community's fiscal year runs from October 1 through September 30.

If you would like a full copy of BRC's audited financial statements, contact Jim Weaver, Vice President of Finance, at **540-828-2665** or **jweaver@brcliving.org**.

## ECONOMIC FOOTPRINT



**Taxes Paid** \$2,138,778

\*taxes paid and/or passed through

**Capital Expenditures** \$3,085,448

\*includes investments in buildings, equipment, vehicles, renovations, & land improvements

**Sustainability & Green Space Investment** \$155,217

\*includes energy study, gardens, and local food sourcing

**Community Contributions** \$69,741

\*includes philanthropic donations, sponsorships, & other charitable giving

**Local Business Investment** \$4,591,572

\*total spent at businesses within the Rockingham/Harrisonburg & Staunton/Augusta/Waynesboro areas

## OCCUPANCY RATES

October 2024 – September 2025



**Independent Living**

268 RESIDENCES

100% Occupied or contracted



**Assisted Living**

not including memory support:

69 APARTMENTS

93% Occupied



**Memory Support**

29 RESIDENCES

100% Occupied



**Nursing Households**

127 RESIDENCES

97% Occupied

**OVERALL**

494 RESIDENCES

97.5% Occupied or contracted

## Bridgwater HealthCare Board of Directors, 2025

Abe Shearer, Chair  
Ann Siciliano, Vice Chair  
Dr. John Downey  
Betsy Hedrick  
Bill Kyger  
Craig Landes  
Sherry Mongold  
John Neff  
Jonah Pence  
Larry Powell  
Jennifer Shirkey

## Senior Leadership Team

Rodney Alderfer, President  
Annie Frazier, Vice President of Development and Community Relations  
Jeannette Suter, Vice President of Independent Living  
Jeff Lambert, Vice President of Health Services  
Laura Spicer, Vice President of Well-Being  
Anne O'Donohue, Vice President of Support Services  
Jim Weaver, Vice President of Finance  
Joel Shank, Vice President of Human Resources

This 2025 Impact Report reflects the work of many. We particularly recognize:

EDITORIAL: Ashlie Heatwole, Communications Specialist  
Jeremy Douylliez, Director of Sales and Marketing  
DESIGN: Blue Ridge Multimedia  
PHOTOGRAPHY: Sera Petras Photography, Dustin Blyer, Ashlie Heatwole, Carrie Budd, Rhonda Collins, Abby Koller, Sarah Lutz, John Neff, Laura Powell, and Joe Ritchie

BRIDGEWATER  
RETIREMENT COMMUNITY

*energy* FOR LIFE

302 North Second Street  
Bridgewater, VA 22812

800.419.9129  
540.828.2550

[www.BRCliving.org](http://www.BRCliving.org)



Every great garden  
starts with the  
*first seed*

800.419.9129  
[brcliving.org](http://brcliving.org)  
302 N 2nd Street  
Bridgewater, VA 22812



INDEPENDENT LIVING  
ASSISTED LIVING  
MEMORY SUPPORT  
NURSING HOUSEHOLDS

At Bridgewater Retirement Community, you have room to grow. That includes outdoor space for residents who enjoy gardening and a community that supports staying active and hands-on with life. Because retirement shouldn't be about settling down.

**BRC**  
*energy*  
FOR LIFE